



Government of India  
Ministry of Earth Sciences



India Meteorological Department

### PRESS RELEASE-3

Time of issue: 1330 hours IST

Dated: 27<sup>th</sup> August, 2024

**Sub: (a) Deep Depression over north Gujarat and (b) Low Pressure Area over northwest Jharkhand and neighbourhood**

#### **(a) Deep Depression over north Gujarat**

Yesterday's Deep Depression over East Rajasthan and adjoining West Madhya Pradesh lay centered over north Gujarat in the morning (0830 hours IST) of today, the 27<sup>th</sup> August near latitude 23.8°N and longitude 72.0 °E, about 10 km west of Patan, 50 km south-southwest of Deesa (Gujarat), 100 km north-northwest of Ahmedabad (Gujarat), 120 km north-northeast of Surendranagar (Gujarat) and 230 km east-northeast of Bhuj (Gujarat).

It is likely to move slowly west-southwestwards across Gujarat region and reach Saurashtra & Kutch coast and adjoining areas of Pakistan and northeast Arabian Sea by morning of 29<sup>th</sup> August.

#### **(b) Low Pressure Area over northwest Jharkhand and neighbourhood**

Yesterday's Well Marked Low Pressure Area over Gangetic West Bengal lay as a low pressure area over Jharkhand and Neighbourhood in the early morning (0530 hours IST) and over northwest Jharkhand & neighbourhood in the morning (0830 hours IST) of today, the 27<sup>th</sup> August 2024. It is likely to continue to move west-northwestwards across Jharkhand, and north Chhattisgarh & adjoining southeast Uttar Pradesh and weaken gradually during next 24 hours.

#### **Warnings:**

##### **(i) Rainfall Warning:**

##### **Gujarat State:**

**(a) North Gujarat region:** Light to moderate rainfall at most places with heavy to very heavy rainfall at isolated places is very likely over North Gujarat on 27<sup>th</sup> August and heavy rainfall at isolated places on 28<sup>th</sup> & 29<sup>th</sup> August.

**(b) South Gujarat Region:** Light to moderate rainfall at most places with heavy to very heavy rainfall at a few places and extremely heavy rainfall at isolated places is likely on 27<sup>th</sup> heavy to very heavy rainfall at isolated places is likely on 28<sup>th</sup> August and heavy rainfall at isolated places during 29<sup>th</sup> to 31<sup>st</sup> August.

**(c) Saurashtra & Kutch:** Light to moderate rainfall at most places with heavy to very heavy rainfall at a few places and extremely heavy rainfall at isolated places is likely during 27<sup>th</sup> to 29<sup>th</sup> and heavy rainfall at isolated places on 30<sup>th</sup> August.

**South Rajasthan:** Light to moderate rainfall at most places with heavy to very heavy rainfall at isolated places is very likely on 27<sup>th</sup> and heavy rainfall at isolated places on 28<sup>th</sup> August.

**Contact:** Cyclone Warning Division, Office of the Director General of Meteorology, India Meteorological Department, Ministry of Earth Sciences, E-mail: [cyclonewarningdivision@gmail.com](mailto:cyclonewarningdivision@gmail.com), Website: [rsmcnewdelhi.imd.gov.in](http://rsmcnewdelhi.imd.gov.in). Spatial rainfall distribution: Isolated: <25%, A few: 26-50%, Many: 51-75%, Most: 76-100%, Rainfall amount (mm): Heavy rain: 64.5 – 115.5, Very heavy rain: 115.6 – 204.4, Extremely heavy rain: 204.5 or more.

**Madhya Maharashtra:** Light to moderate rainfall at most places with heavy to very heavy rainfall at isolated places on 27<sup>th</sup> and heavy rainfall at isolated places is likely on 28<sup>th</sup> August.

**Konkan & Goa:** Light to moderate rainfall at most places with heavy to very heavy rainfall at isolated places on 27<sup>th</sup> and heavy rainfall at isolated places is likely on 28<sup>th</sup> August.

**West Madhya Pradesh:** Light to moderate rainfall at most places with heavy rainfall at isolated places over West Madhya Pradesh is very likely on 27<sup>th</sup> August.

**Odisha:** Light to moderate rainfall at most places with heavy rainfall at isolated places is likely during 27<sup>th</sup> to 28<sup>th</sup> August and heavy to very heavy rainfall on 29<sup>th</sup> August.

**Gangetic West Bengal:** Light to moderate rainfall at most places with heavy rainfall at isolated places is likely on 27<sup>th</sup> August.

**Jharkhand:** Light to moderate rainfall at many places with heavy to very heavy rainfall at isolated places is likely on 27<sup>th</sup> and heavy rainfall at isolated places on 28<sup>th</sup> August.

**Bihar:** Light to moderate rainfall at many places with heavy rainfall at isolated places is likely during 27<sup>th</sup> to 28<sup>th</sup> August.

**(ii) Wind warning:**

- Squally wind speed reaching 40-50 kmph gusting to 60 kmph is very likely over the districts of North Gujarat region on 27<sup>th</sup> August; Squally wind speed reaching 45-55 kmph gusting to 65 kmph is likely over the districts of South Gujarat Region and Saurashtra & Kutch during 27<sup>th</sup>-29<sup>th</sup> August.
- Squally wind speed reaching 55-65 kmph gusting to 75 kmph is very likely to prevail along & off Gujarat coasts & adjoining Pakistan coasts and northeast & adjoining eastcentral Arabian Sea during 27<sup>th</sup>-30<sup>th</sup> August.
- Strong surface wind speed reaching 40-50 kmph gusting to 60 kmph is very likely to prevail over South Rajasthan on 27<sup>th</sup> August.
- Squally wind speed reaching 40-50 kmph gusting to 60 kmph is likely to prevail along and off north Maharashtra coasts on 27- 29<sup>th</sup> August.

**(iii) Sea condition:**

- Squally weather with Rough to very Rough sea conditions is very likely to prevail along & off Gujarat & adjoining Pakistan and north Maharashtra Coasts and Northeast & adjoining Eastcentral Arabian Sea till 30<sup>th</sup> August.

**(iv) Fisherman warning:**

- Fishermen are advised not venture into Northeast & adjoining Eastcentral Arabian Sea and along & off Gujarat & adjoining Pakistan and north Maharashtra Coasts till 30<sup>th</sup> August.

**(v) Advisory for offshore/onshore Exploration and Production (E & P) Operators:**

The small ships and offshore -onshore E & P operators, shipping and port authorities along & off Gujarat & north Maharashtra Coasts and Northeast & adjoining Eastcentral Arabian Sea are advised to keep watch on developing weather and take necessary actions.

**Contact:** Cyclone Warning Division, Office of the Director General of Meteorology, India  
**Meteorological Department, Ministry of Earth Sciences, E-mail:** cyclonewarningdivision@gmail.com,  
**Website:** [rsmcnewdelhi.imd.gov.in](http://rsmcnewdelhi.imd.gov.in). **Spatial rainfall distribution:** Isolated: <25%, A few: 26-50%, Many: 51-75%, Most: 76-100%, **Rainfall amount (mm):** Heavy rain: 64.5 – 115.5, Very heavy rain: 115.6 – 204.4, Extremely heavy rain: 204.5 or more.

**(vi) Impact Expected**

- Localized Flooding of roads, water logging in low lying areas and closure of underpasses mainly in urban areas of the above region.
- Occasional reduction in visibility due to heavy rainfall.
- Reduction of visibility over sea area due to sea spray induced by strong wind and heavy rainfall.
- Disruption of traffic in major cities due to water logging in roads leading to increased travel time.
- Minor damage to kutcha roads.
- Possibilities of damage to vulnerable structure.
- Localized Landslides/Mudslides/landslips/mud slips/land sinks/mud sinks.
- Damage to horticulture and standing crops in some areas due to inundation.
- It may lead to riverine flooding in some river catchments (for riverine flooding please visit Web page of CWC)

**(v) Action Suggested**

- Fishermen are advised not to venture into Northeast & adjoining Eastcentral Arabian Sea and along & off Gujarat & adjoining Pakistan and north Maharashtra Coasts till 30th August.
- Judicious regulation of offshore/onshore Operations
- Judicious regulation of surface transports including railways and roadways.
- Check for traffic congestion on your route before leaving for your destination.
- Follow any traffic advisories that are issued in this regard.
- Avoid going to areas that face the water logging problems often.
- Avoid staying in vulnerable structure.

**(vi) Agromet advisories for Heavy Rainfall likely over various Madhya Pradesh, South Rajasthan, Gujarat State and North Maharashtra**

- Make provision for draining out excess water from crop fields to avoid water stagnation in Madhya Pradesh, South Rajasthan, Gujarat State and North Maharashtra.
- Provide mechanical support to horticultural crops and staking to vegetables.

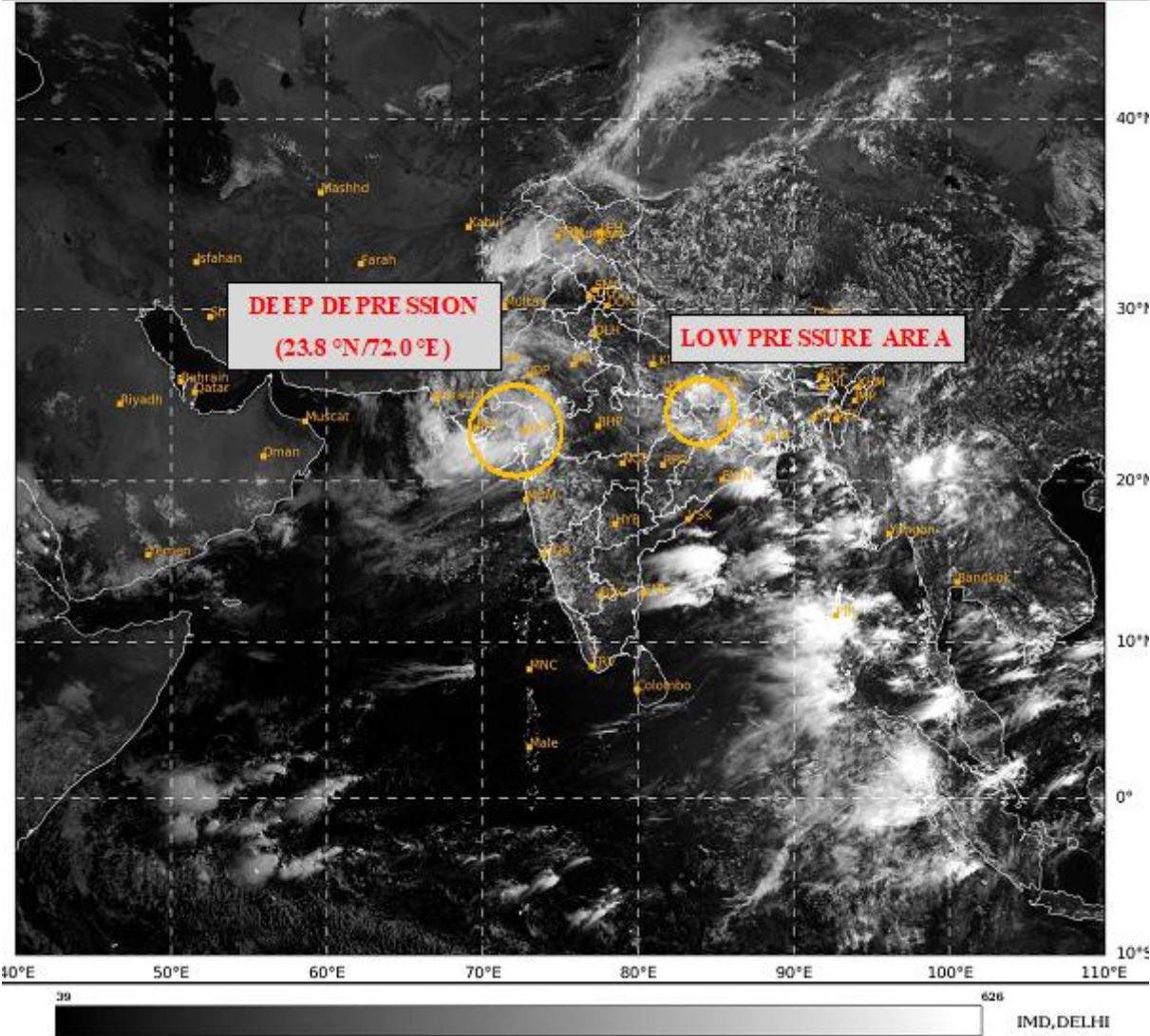
All associated graphics have been kept in Annexure-1. The 24 hours accumulated realised rainfall ( $\geq 7$  cm) ending at 0830 hours IST of 27<sup>th</sup> August is kept in Annexure-2.

**Next Press Release will be issued at 1330 hours IST of tomorrow, the 28<sup>th</sup> August, 2024.**

**Contact: Cyclone Warning Division, Office of the Director General of Meteorology, India Meteorological Department, Ministry of Earth Sciences, E-mail: [cyclonewarningdivision@gmail.com](mailto:cyclonewarningdivision@gmail.com), Website: [rsmcnewdelhi.imd.gov.in](http://rsmcnewdelhi.imd.gov.in). Spatial rainfall distribution: Isolated: <25%, A few: 26-50%, Many: 51-75%, Most: 76-100%, Rainfall amount (mm): Heavy rain: 64.5 – 115.5, Very heavy rain: 115.6 – 204.4, Extremely heavy rain: 204.5 or more.**

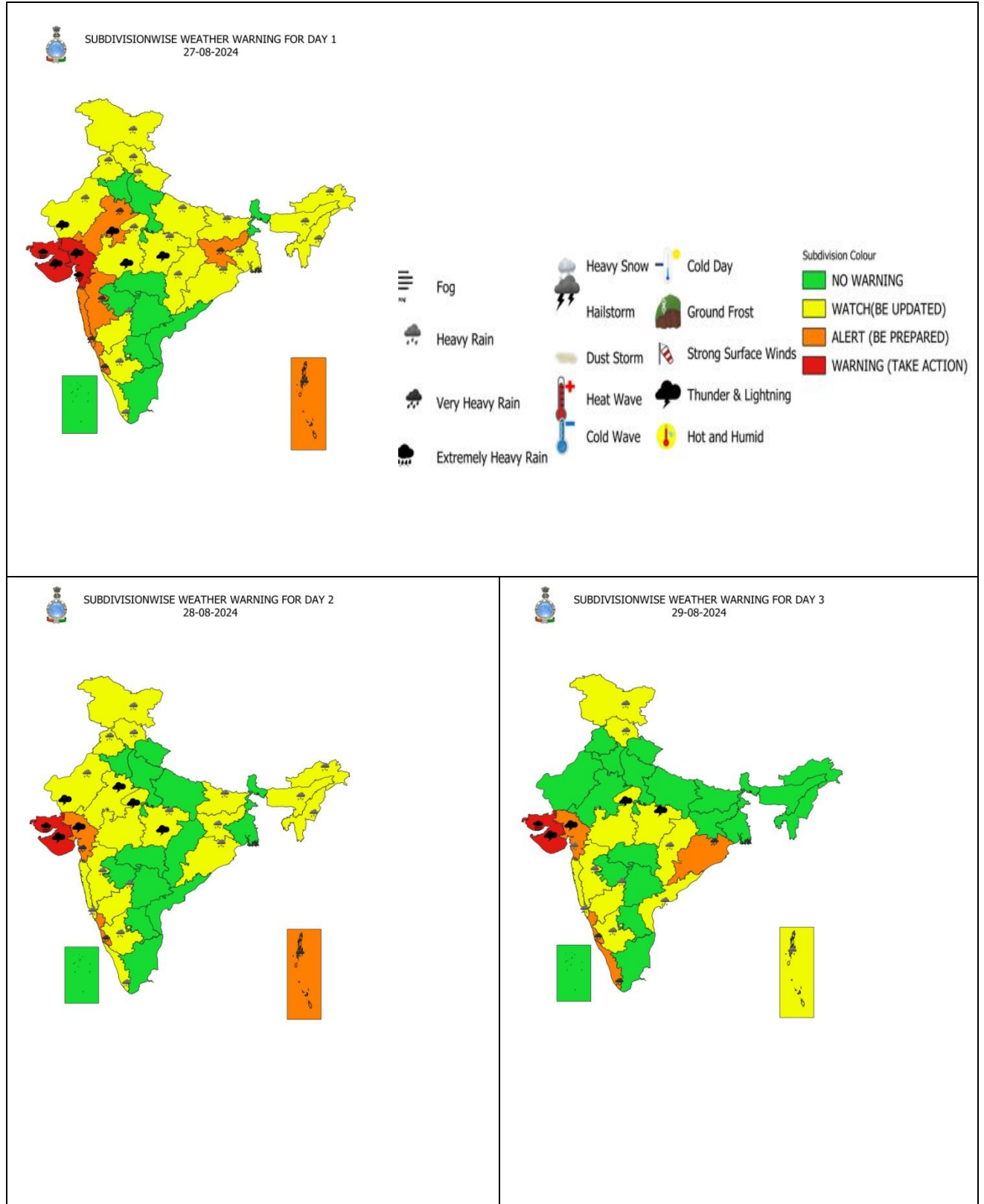
SAT : INSAT-3DR IMG  
 Visible Count 0.65 um  
 LIC Mercator

27-08-2024/(0445 to 0512) GMT  
 27-08-2024/(1015 to 1042) IST

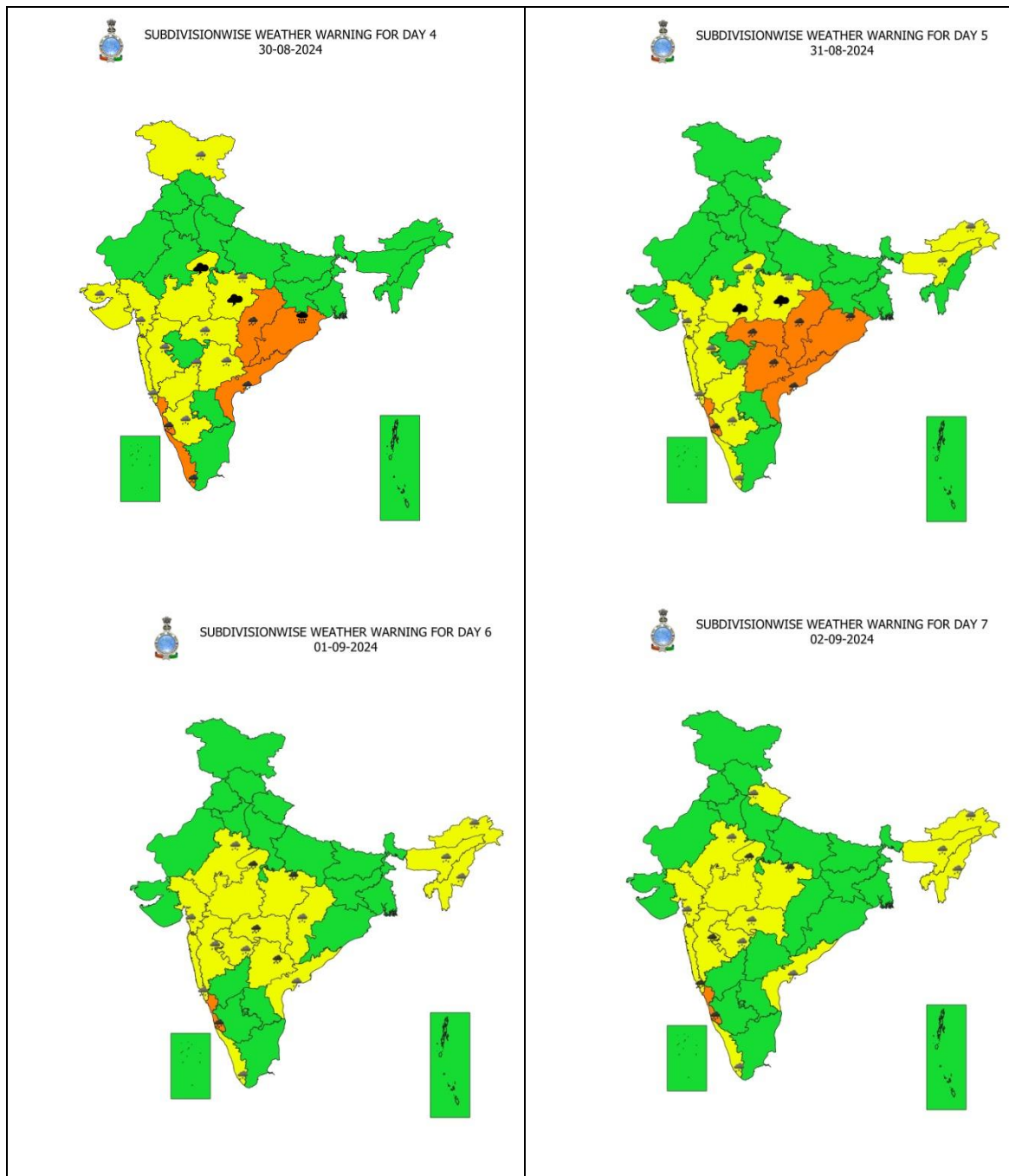


Contact: Cyclone Warning Division, Office of the Director General of Meteorology, India Meteorological Department, Ministry of Earth Sciences, E-mail: cyclonewarningdivision@gmail.com, Website: [rsmcnewdelhi.imd.gov.in](http://rsmcnewdelhi.imd.gov.in). Spatial rainfall distribution: Isolated: <25%, A few: 26-50%, Many: 51-75%, Most: 76-100%, Rainfall amount (mm): Heavy rain: 64.5 – 115.5, Very heavy rain: 115.6 – 204.4, Extremely heavy rain: 204.5 or more.

## Weather Warning Graphics



**Contact:** Cyclone Warning Division, Office of the Director General of Meteorology, India Meteorological Department, Ministry of Earth Sciences, E-mail: [cyclonewarningdivision@gmail.com](mailto:cyclonewarningdivision@gmail.com), Website: [rsmcnewdelhi.imd.gov.in](http://rsmcnewdelhi.imd.gov.in). Spatial rainfall distribution: Isolated: <25%, A few: 26-50%, Many: 51-75%, Most: 76-100%, Rainfall amount (mm): Heavy rain: 64.5 – 115.5, Very heavy rain: 115.6 – 204.4, Extremely heavy rain: 204.5 or more.

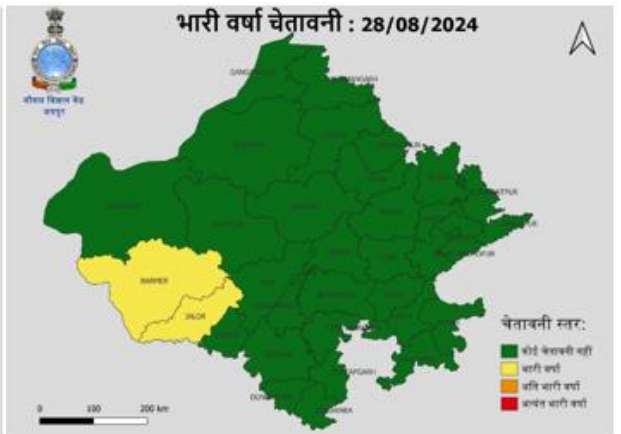
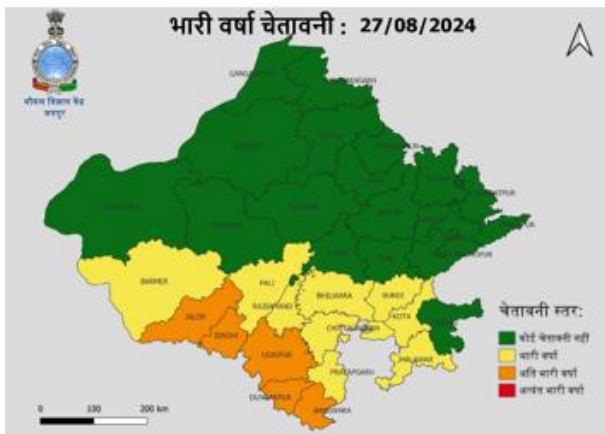
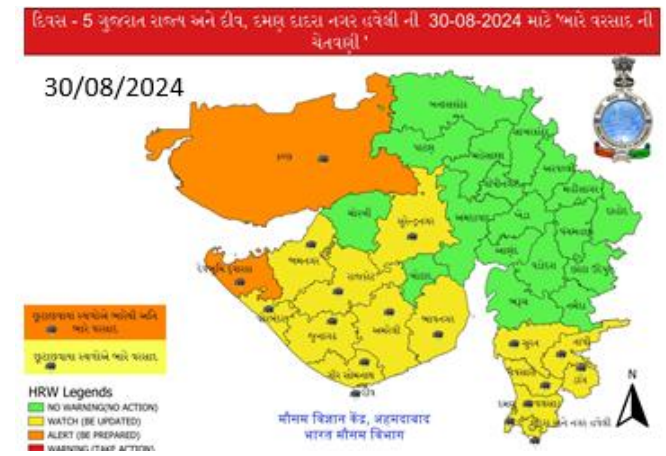
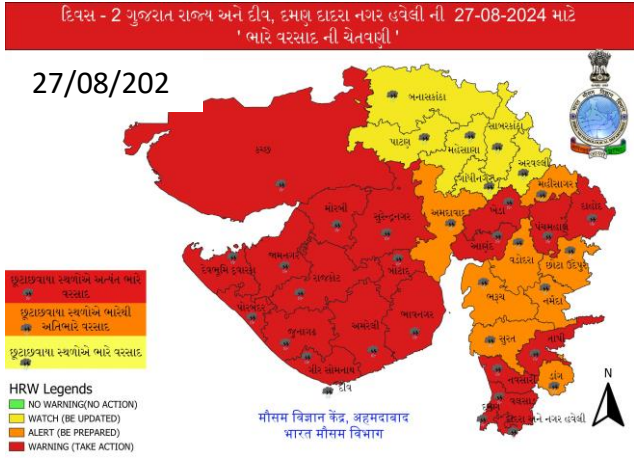


Action may be taken based on **ORANGE AND RED** COLOUR warnings.

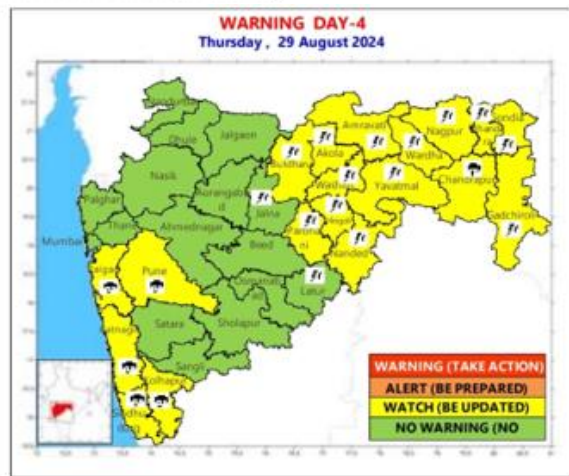
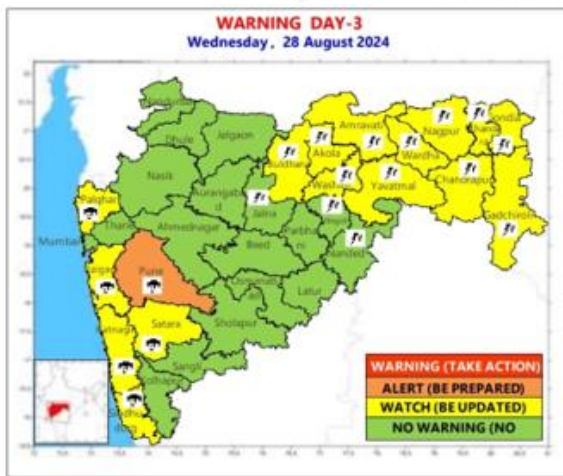
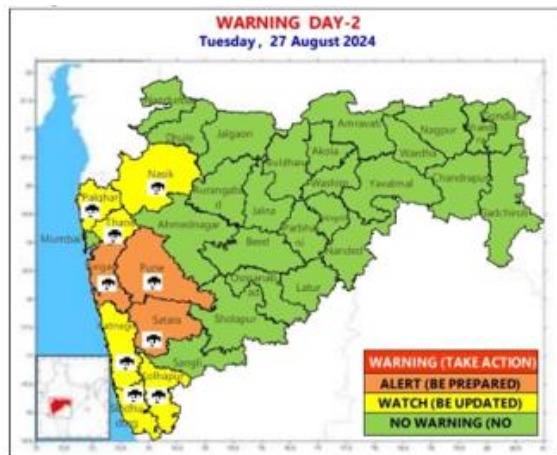
- Vulnerable regions likely urban and hilly areas action may be initiated for heavy rainfall warning.
- As the lead period increases forecast accuracy decreases.

Contact: Cyclone Warning Division, Office of the Director General of Meteorology, India Meteorological Department, Ministry of Earth Sciences, E-mail: [cyclonewarningdivision@gmail.com](mailto:cyclonewarningdivision@gmail.com), Website: [rsmcnewdelhi.imd.gov.in](http://rsmcnewdelhi.imd.gov.in). Spatial rainfall distribution: Isolated: <25%, A few: 26-50%, Many: 51-75%, Most: 76-100%, Rainfall amount (mm): Heavy rain: 64.5 – 115.5, Very heavy rain: 115.6 – 204.4, Extremely heavy rain: 204.5 or more.

## District wise Warning Graphics



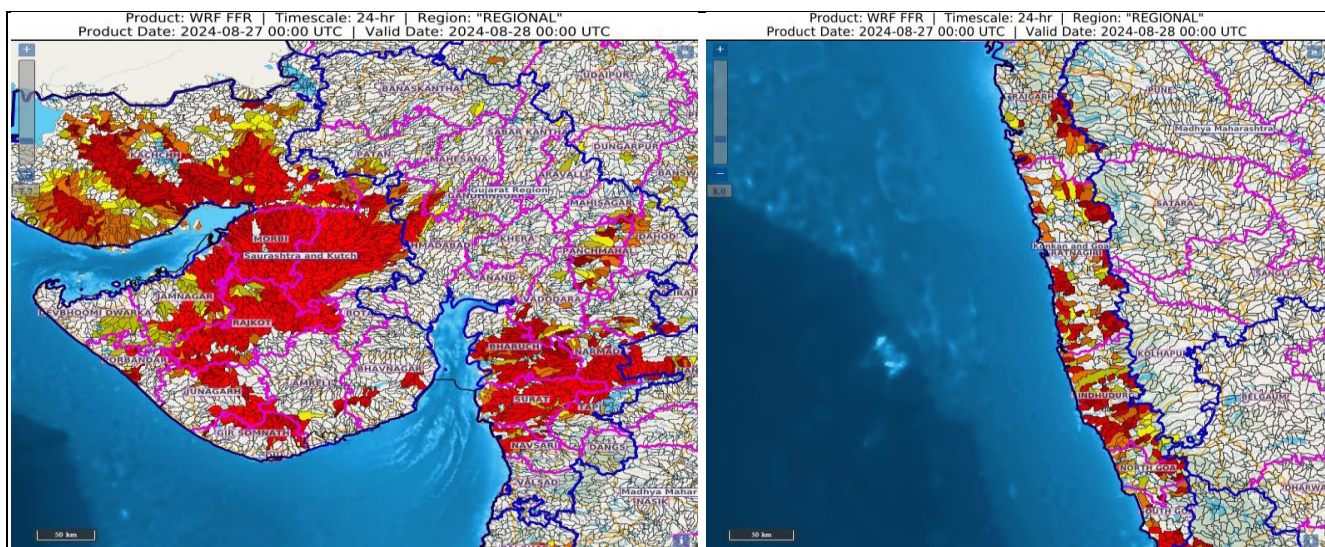
**Contact: Cyclone Warning Division, Office of the Director General of Meteorology, India Meteorological Department, Ministry of Earth Sciences, E-mail: cyclonewarningdivision@gmail.com, Website: [rsmcnewdelhi.imd.gov.in](http://rsmcnewdelhi.imd.gov.in). Spatial rainfall distribution: Isolated: <25%, A few: 26-50%, Many: 51-75%, Most: 76-100%, Rainfall amount (mm): Heavy rain: 64.5 – 115.5, Very heavy rain: 115.6 – 204.4, Extremely heavy rain: 204.5 or more.**






Contact: Cyclone Warning Division, Office of the Director General of Meteorology, India  
 Meteorological Department, Ministry of Earth Sciences, E-mail: cyclonewarningdivision@gmail.com,  
 Website: [rsmcnewdelhi.imd.gov.in](http://rsmcnewdelhi.imd.gov.in). Spatial rainfall distribution: Isolated: <25%, A few: 26-50%, Many: 51-75%, Most: 76-100%, Rainfall amount (mm): Heavy rain: 64.5 – 115.5, Very heavy rain: 115.6 – 204.4, Extremely heavy rain: 204.5 or more.



## Flood Guidance



### Flash Flood Risk

	<b>High Risk (Take Action)</b>
	<b>Moderate Risk (Be Prepared)</b>
	<b>Low Risk (Be Updated)</b>

### 24 hours Outlook for the Flash Flood Risk (FFR) till 0530 IST of 28-08-2024 :

Moderate flash flood risk likely over few watersheds & neighbourhoods of

**Gujarat Region** - Bharuch, Chhota Udepur, Narmada, Navsari, Surat, Tapi and Vadodara districts.

**Saurashtra & Kutch** - Amreli, Bhavnagar, Botad, Diu, Gir Somnath, Jamnagar, Junagarh, Porbandar, Rajkot, Surendranagar, Morbi and Kachchh districts.

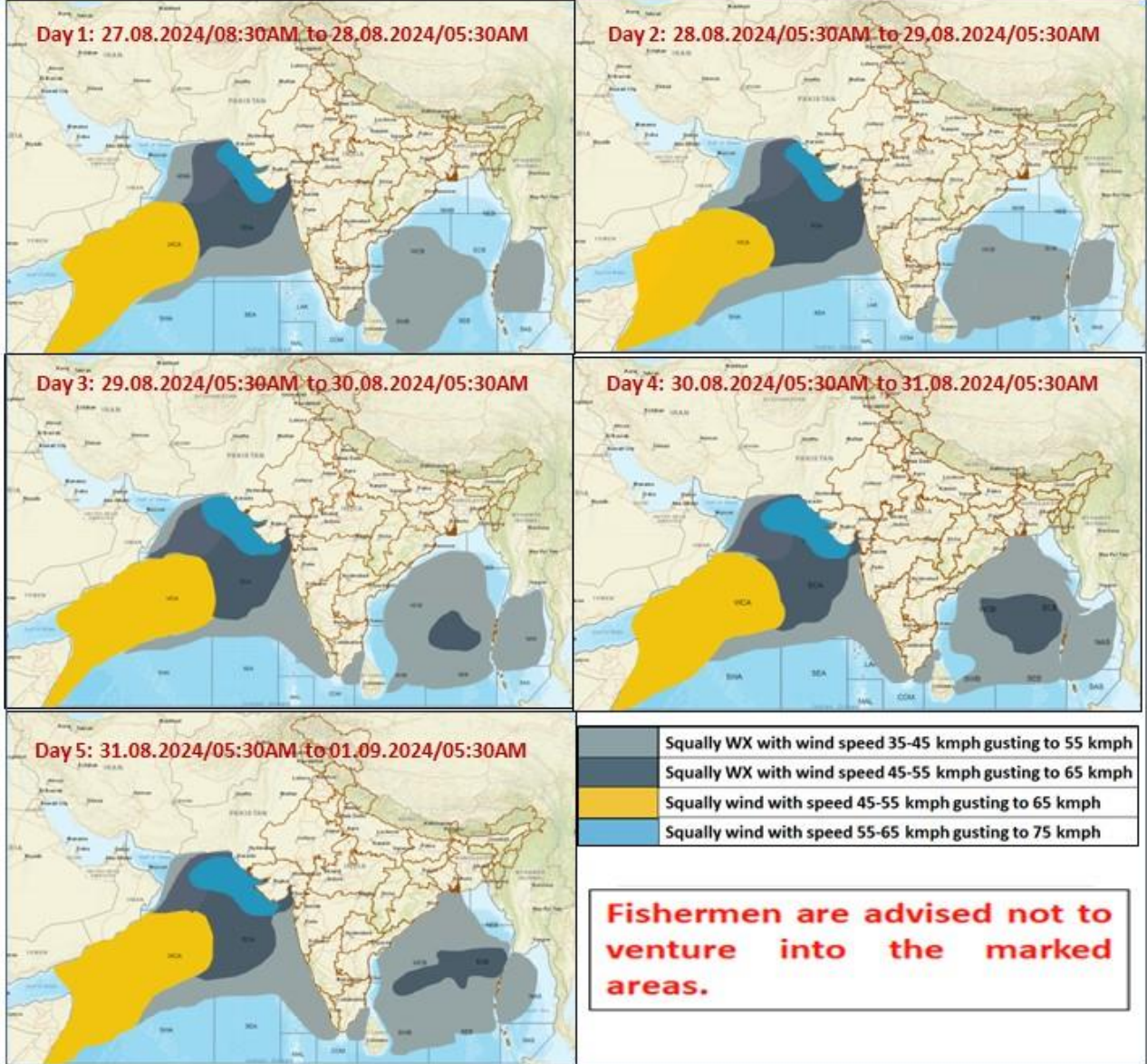
Low flash flood risk likely over few watersheds & neighbourhoods of

**Konkan & Goa** - North Goa, South Goa, Mumbai City, Palghar, Raigarh, Ratnagiri, Sindhudurg and Suburban Mumbai districts.

Surface runoff/ Inundation may occur at some fully saturated soils & low-lying areas over Area of Concern (AoC) as shown in map due to expected rainfall occurrence in next 24 hours.

Contact: Cyclone Warning Division, Office of the Director General of Meteorology, India  
Meteorological Department, Ministry of Earth Sciences, E-mail: cyclonewarningdivision@gmail.com,  
Website: [rsmcnewdelhi.imd.gov.in](http://rsmcnewdelhi.imd.gov.in). Spatial rainfall distribution: Isolated: <25%, A few: 26-50%, Many: 51-75%, Most: 76-100%, Rainfall amount (mm): Heavy rain: 64.5 – 115.5, Very heavy rain: 115.6 – 204.4, Extremely heavy rain: 204.5 or more.

**Fishermen Warning Graphics**



Contact: Cyclone Warning Division, Office of the Director General of Meteorology, India Meteorological Department, Ministry of Earth Sciences, E-mail: cyclonewarningdivision@gmail.com, Website: [rsmcnewdelhi.imd.gov.in](http://rsmcnewdelhi.imd.gov.in). Spatial rainfall distribution: Isolated: <25%, A few: 26-50%, Many: 51-75%, Most: 76-100%, Rainfall amount (mm): Heavy rain: 64.5 – 115.5, Very heavy rain: 115.6 – 204.4, Extremely heavy rain: 204.5 or more.

**Significant Rainfall recorded during past 24 hours till 0830 hours IST of today 27.08.2024 (in cm):**

- ❖ **Saurashtra & Kutch:** Tankara (Morbi) 36, Wankaner (Morbi) 34, Rajkot (Rajkot) 32, Kalavad (Jamnagar) 26, Mandvi(k) (Kutch) 25, Khambhalia (Devbhoomi Dwarka) 25, Lodhika (Rajkot) 23, Chotila (Surendranagar) 22, Morbi (Morbi) 22, Nakhatrana (Kutch) 22, Thangadh (Surendranagar) 21, Lalpur (Jamnagar) 21, Kotdasangani (Rajkot) 17, Chuda (Surendranagar) 16, Jodia (Jamnagar) 16, Dhrol (Jamnagar) 14, Sayla (Surendranagar) 14, Lakhtar (Surendranagar) 13, Barvala (Botad) 13, Jamnagar (Jamnagar) 12, Gadhdha (Botad) 12, Dasada (Surendranagar) 12, Vadia (Amreli) 12, Paddhari (Rajkot) 12, Gondal (Rajkot) 12, Botad (Botad) 12, Visavadar (Junagadh) 11, Ranpur (Botad) 11, Muli (Surendranagar) 11, Wadhvan (Surendranagar) 11, Jasdan (Rajkot) 11, Dwarka (Devbhoomi Dwarka) 11, Naliya (Kutch) 11, Babra (Amreli) 11, Kalyanpur (Devbhoomi Dwarka) 10, Jamnagar (Jamnagar) 10, Okha (Devbhoomi Dwarka) 10, Surendranagar (Surendranagar) 10, Keshod (Junagadh) 10
- ❖ **Gujarat Region:** Morva Hadaf (Panchmahal) 34, Tarapur (Anand) 31, Nadiad (Kheda) 29, Khambhat (Anand) 29, Borsad (Anand) 28, Padra (Vadodara) 28, Vadodara (Vadodara) 28, Godhra (Panchmahal) 27, Sojitra (Anand) 27, Wanakbori (Mahisagar) 26, Anand (Anand) 24, Mahemdavad (Kheda) 23, Vaso (Kheda) 22, Balasinor (Mahisagar) 21, Mahudha (Kheda) 21, Dholka (Ahmedabad) 20, Bilodara\_aws (Kheda) 19, Matar (Kheda) 19, Kheda (Kheda) 19, Meghraj (Aravalli) 19, Halol (Panchmahal) 18, Ghoghamba (Panchmahal) 18, Jotana (Mehsana) 18, Galteshwar (Kheda) 17, Shahera (Panchmahal) 17, Santrampur (Mahisagar) 17, Jambughoda (Panchmahal) 17, Limkheda (Dahod) 17, Dhandhuka (Ahmedabad) 17, Arnej\_aws (Ahmedabad) 16, Siddhpur (Patan) 15, Fatepura (Dahod) 15, Kadi (Mehsana) 15, Singvad (Dahod) 14, Dhandhuka (Ahmedabad) 14, Mansa (Gandhinagar) 14, Abad City (Ahmedabad) 14, Kathalal (Kheda) 14, Chhota Udepur (Chhota Udepur) 14, Khanpur (Mahisagar) 14, Anklav (Anand) 14, Umreth (Anand) 13, Visnagar (Mehsana) 13, Modasa (Aravalli) 13, Dascroi (Ahmedabad) 13, Mc Ahmedabad (Ahmedabad) 13, Mandal (Ahmedabad) 13, Waghai (Dangs) 13, Bavla (Ahmedabad) 12, Virpur (Mahisagar) 12, Savli (Vadodara) 12, Dholera (Ahmedabad) 12, Becharaji (Mehsana) 12, Viramgam (Ahmedabad) 11, Jhalod (Dahod) 11, Dang (Dangs) 11, Vadodara\_aws (Vadodara) 11, Desar (Vadodara) 11, Harij (Patan) 11, Waghodia (Vadodara) 11, Petlad (Anand) 11, Bayad (Aravalli) 11, Jetpur Pavi (Chhota Udepur) 11, Vadnagar (Mehsana) 11, Godra\_aws (Panchmahal) 11, Bodeli (Chhota Udepur) 11, Vijapur (Mehsana) 10, Subir (Dangs) 10, Dhanpur (Dahod) 10, Gandhinagar (Gandhinagar) 10, Mahesana (Mehsana) 10, Kalol(g) (Gandhinagar) 10, Sanjeli (Dahod) 10, Dahegam (Gandhinagar) 10, Detroj (Ahmedabad) 10, Prantij (Sabarkantha) 10
- ❖ **Chhattisgarh:** Kusmi (Balrampur) 25, Wandrafnagar (Balrampur) 15, Raghunath Nagar (Balrampur) 9, Manora (Jashpur) 9, Sanna (Jashpur) 7
- ❖ **East Rajasthan:** Bagidora(Banswara) 20, Sallopat(Banswara) 17, Shergarh(Banswara) 17, Dhambola (Dungarpur) 14, Veja(Dungarpur) 13, Arthuna (Banswara) 11, Sajjangarh (Banswara) 10, Loharia (Banswara) 9, Khushalgarh (Banswara) 9, Chikali (Dungarpur) 9, Garhi (Banswara) 8, Kanva (Dungarpur) 7, Galiakot (Dungarpur) 7, Sanganer Tehsil(Jaipur) 7
- ❖ **East Madhya Pradesh:** Kusmi (Sidhi) 15, Sidhi (gopadbanas) (Sidhi) 14, Churhat (Sidhi) 14, Nagode (Satna) 11, Beohari (Shahdol) 11, Bahri (Sidhi) 11, Rampur (Sidhi) 10, Majhauili (Sidhi) 9, Devser (Singrauli) 9, Sihawal (Sidhi) 9, Orchha (Niwari) 8, Bilhari (Katni) 8, Naigarhi (Rewa) 7, Semariya (Rewa) 7, Gudh (Rewa) 7, Lavkushnagar (Chhatarpur) 7

**Contact: Cyclone Warning Division, Office of the Director General of Meteorology, India Meteorological Department, Ministry of Earth Sciences, E-mail: cyclonewarningdivision@gmail.com, Website: [rsmcnewdelhi.imd.gov.in](http://rsmcnewdelhi.imd.gov.in). Spatial rainfall distribution: Isolated: <25%, A few: 26-50%, Many: 51-75%, Most: 76-100%, Rainfall amount (mm): Heavy rain: 64.5 – 115.5, Very heavy rain: 115.6 – 204.4, Extremely heavy rain: 204.5 or more.**

- ❖ **Madhya Maharashtra:** Gaganbawada (Kolhapur) 13, Mahabaleshwar- Imd Obsy (Satara) 13, Surgana (Nashik) 12, Lonavala\_agri (Pune) 11, Trimbakshwar (Nashik) 11, Shahuwadi (Kolhapur) 10, Ajra (Kolhapur) 9, Chandgad (Kolhapur) 9, Radhanagari (Kolhapur) 9, Velhe (Pune) 9, Peth (Nashik) 8, Patan (Satara) 7, Igatpuri (Nashik) 7, Harsul (Nashik) 7
- ❖ **Konkan & Goa:** Jawhar (Palghar) 12, Awalegaon - Arg (Sindhudurg) 10, Matheran (Raigad) 8, Pawarwadi (Ratnagiri) 8, Lanja (Ratnagiri) 7, Mandangad (Ratnagiri) 7, Mokheda (Palghar) 7, Vikramgad (Palghar) 7, Rajapur (Ratnagiri) 7
- ❖ **West Madhya Pradesh:** Kathiwada (Alirajpur) 10, Bhabhra (Alirajpur) 9, Meghnagar (Jhabua) 7, Udaigarh (Alirajpur) 7, Thandla (Jhabua) 7
- ❖ **Bihar:** Khaira (Jamui) 7, Silao (Nalanda) 7, Sono (Jamui) 7
- ❖ **Jharkhand:** Rania (Khunti) 14, Kharsema (Seraikela-Kharsawan) 13, Maithon (Dhanbad) 12, Dumri (Giridih) 12, Bagodari (Giridih) 11, Panchet Dist Dhanbad) 9, Nandadih (Giridih) 9, Panchet (Dhanbad) 9, Nawadih (Bokaro) 9, Dumri (Giridih) 9, Hunterganj (Chatra) 8, Chandil (Seraikela-Kharsawan) 8, Markachou (Koderma) 8, Gobindpur (Dhanbad) , Madhupur (Deoghar) 8, Chakulia (East Singbhum) 8, Torpa (Khunti) 7, Giridih Bengbad (Giridih) 7, Giridih (Giridih) 7, Jamtara Fmo (Jamtara) 7, Diyakel Khunti (Khunti) 7
- ❖ **Orissa:** Jagatsinghpur ( Jagatsinghpur) 11, Cuttack ( Cuttack) 9, Bhuban ( Dhenkanal) 9, Kantapada ( Cuttack) 9, Athgarh ( Cuttack) 7, Mundali ( Cuttack) 7, Banki ( Cuttack) 7
- ❖ **Chhattisgarh:** Kusmi (Balrampur) 25, Wandrafnagar (Balrampur) 15, Raghunath Nagar (Balrampur) 9, Manora (Jashpur) 9, Sanna (Jashpur) 7
- ❖ **Gangetic West Bengal:** Bankura (Bankura) 13, Luchipur (Paschim Bardhaman) 11, Diamond Harbour (South 24 Parganas) 11, Bankura (Bankura) 10, Asansol (Paschim Bardhaman) 9, Asansol (Paschim Bardhaman) 9, Jhargram (pto) (Jhargram) 8, Burnpur (Paschim Bardhaman) 8, Kalaikunda (West Midnapore) 7, Midnapore (West Midnapore) 7

**Contact:** Cyclone Warning Division, Office of the Director General of Meteorology, India  
**Meteorological Department, Ministry of Earth Sciences, E-mail:** cyclonewarningdivision@gmail.com,  
**Website:** [rsmcnewdelhi.imd.gov.in](http://rsmcnewdelhi.imd.gov.in). **Spatial rainfall distribution:** Isolated: <25%, A few: 26-50%, Many: 51-75%, Most: 76-100%, **Rainfall amount (mm):** Heavy rain: 64.5 – 115.5, Very heavy rain: 115.6 – 204.4, Extremely heavy rain: 204.5 or more.